

Exterior doors – Material (C)

- Door to Door Exterior Fir 4 Lite Over Raised Panel



Roof Shingles – Material (D)

- GAF Timberline Natural Shadow 33.3-sq ft Laminated Architectural Roof Shingles
- Color: Charcoal
- Item #652976
- Model #0600180



Decking – Material (E)

- Severe Weather 5/4-in x 6-in x 16-ft Premium Pressure Treated Lumber
- Color: SW 3524 Chestnut
- Item #468991
- Model #5616P



SW 3524
Chestnut



Rails – Material (F)

- Severe Weather 6-ft x 1.5-in x 33-in Pressure Treated Wood Deck Rail Kit Balusters Included (Assembled)
- Color: SW 6991 Black Magic
- Item #489068
- Model #HRS6T15EL



SW 6991
Black Magic
Interior / Exterior
Location Number: 251-C3



Eave and Cornice, Windows/Doors Trim and Corner board (G)

- Existing details are to be repaired and repainted
- Color: SW 7757 High Reflective White

SW 7757
High Reflective White
Interior
Location Number: 256-C1



A

B

C

D

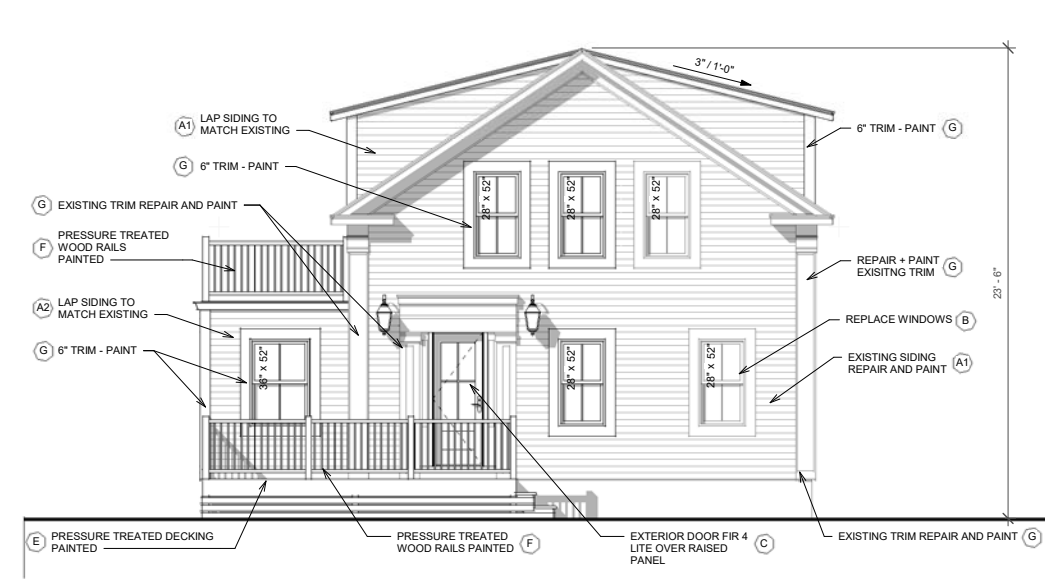
KEYED NOTES

1

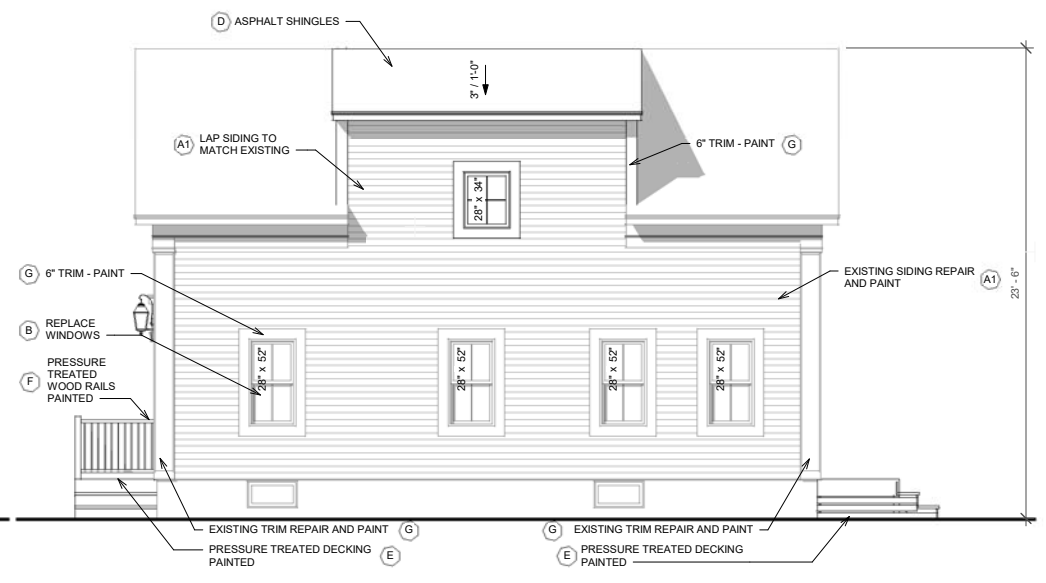
2

3

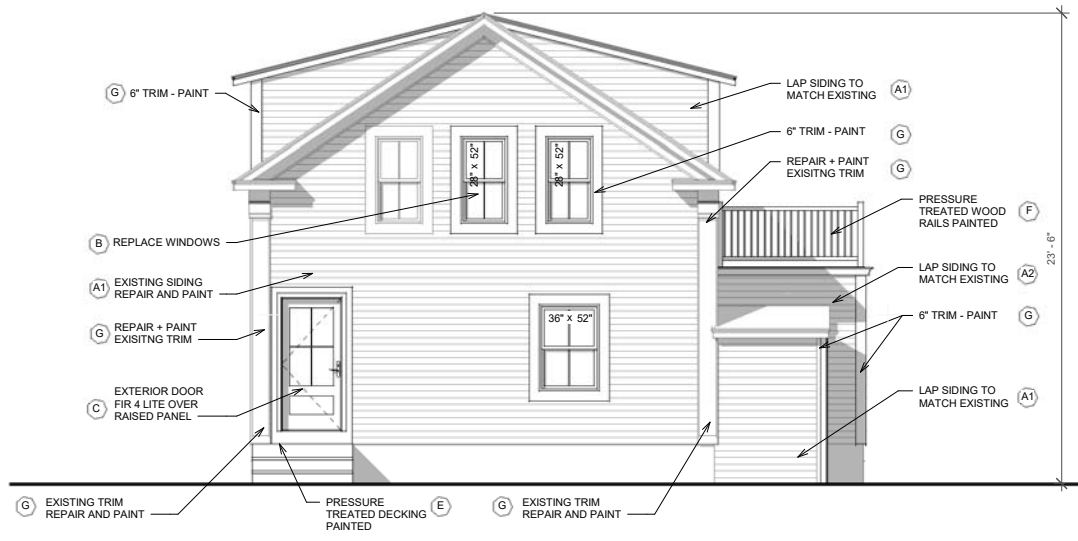
4



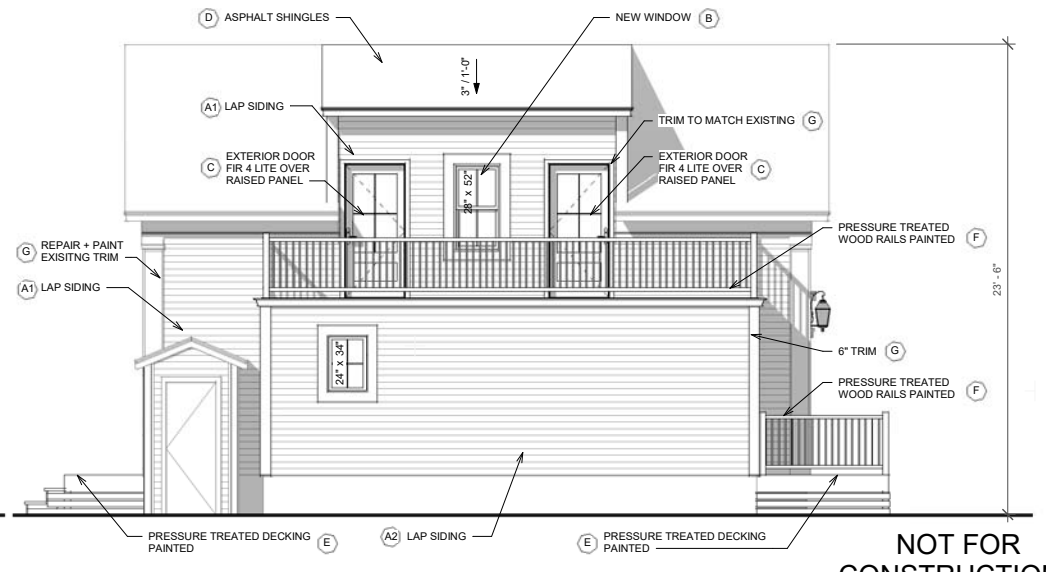
A2 SOUTH ELEVATION
1/4" = 1'-0"



A2 EAST ELEVATION
1/4" = 1'-0"



A4 NORTH ELEVATION
1/4" = 1'-0"



A4 WEST ELEVATION
1/4" = 1'-0"

DAVID SISSON ARCHITECTURE PC
345 Taunton Ave
East Providence RI 02914
www.dsa-arch.com info@dsa-arch.com 401-595-7070

REV. #	DATE	ISSUED FOR
	2021/07/29	ZONING REVIEW

29 Lion St
East Greenwich, RI 02818
PROJECT NUMBER: 21066

ELEVATIONS



DATE SIGNED:
2021-07-29

A5.0

NOT FOR
CONSTRUCTION -
ZONING REVIEW ONLY